

© This drawing is Copyright. It should not be relied on or used in circumstances other than those for which it was originally prepared and for which Cornwall Council was originally commissioned. Cornwall Council accepts no responsibility for this drawing to any party other than the person(s) by whom it was commissioned.

- NOTES:**
1. All dimensions are in metres unless otherwise stated.
 2. Do not scale from this drawing.

REV	DATE	NATURE OF REVISION
P01		First Issue
REV		NATURE OF REVISION



CORMAC SOLUTIONS

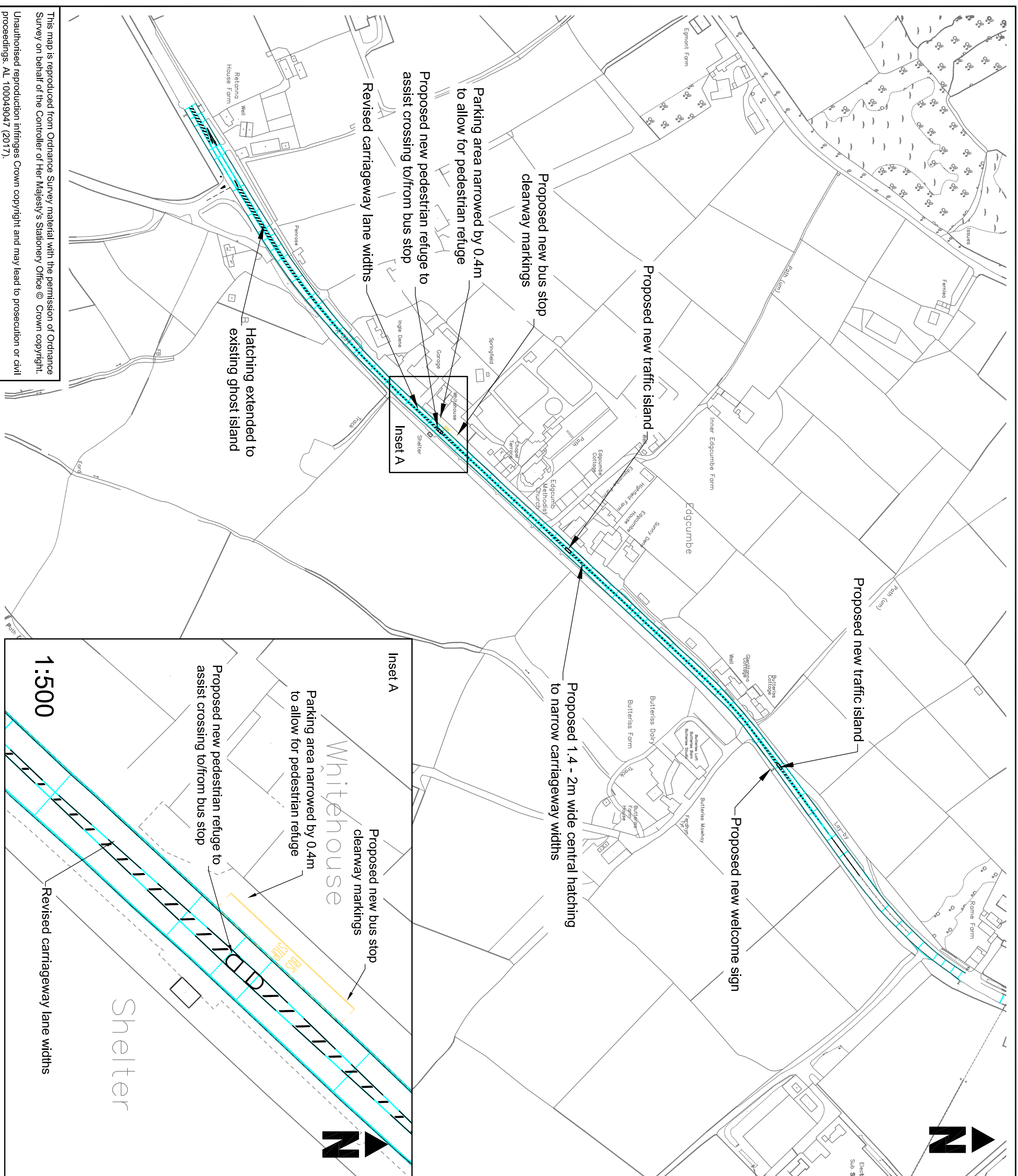
RADNOR ROAD
SCORRIER
CORNWALL TR16 5EH
01872 323 313
www.cormacdl.co.uk

PROJECT TITLE:
A394 Edgumbe
Local Safety Scheme
DRAWING TITLE:
Consultation Drawing

SCALE:
1:3000 @ A3

PROJECT MANAGER: AR	DRAWN BY: DS
CHECKED: JB	APPROVED: JB
04/01/17	04/01/17

DRAWING NO:	I ORIGINATOR	I VOLUME	I LOCATION
EDG1151	- CSL	- HSN	- SW717329 -
TYPE	I ROLE	I NUMBER	
DE	- D	- 0003	
PROJECT REF:	DRAWING STATUS:	SUITABILITY:	REVISION:
EDG1151	Consultation	S3	P01



This map is reproduced from Ordnance Survey material with the permission of Ordnance Survey on behalf of the Controller of Her Majesty's Stationery Office © Crown copyright. Unauthorised reproduction infringes Crown copyright and may lead to prosecution or civil proceedings. AL 100049047 (2017).